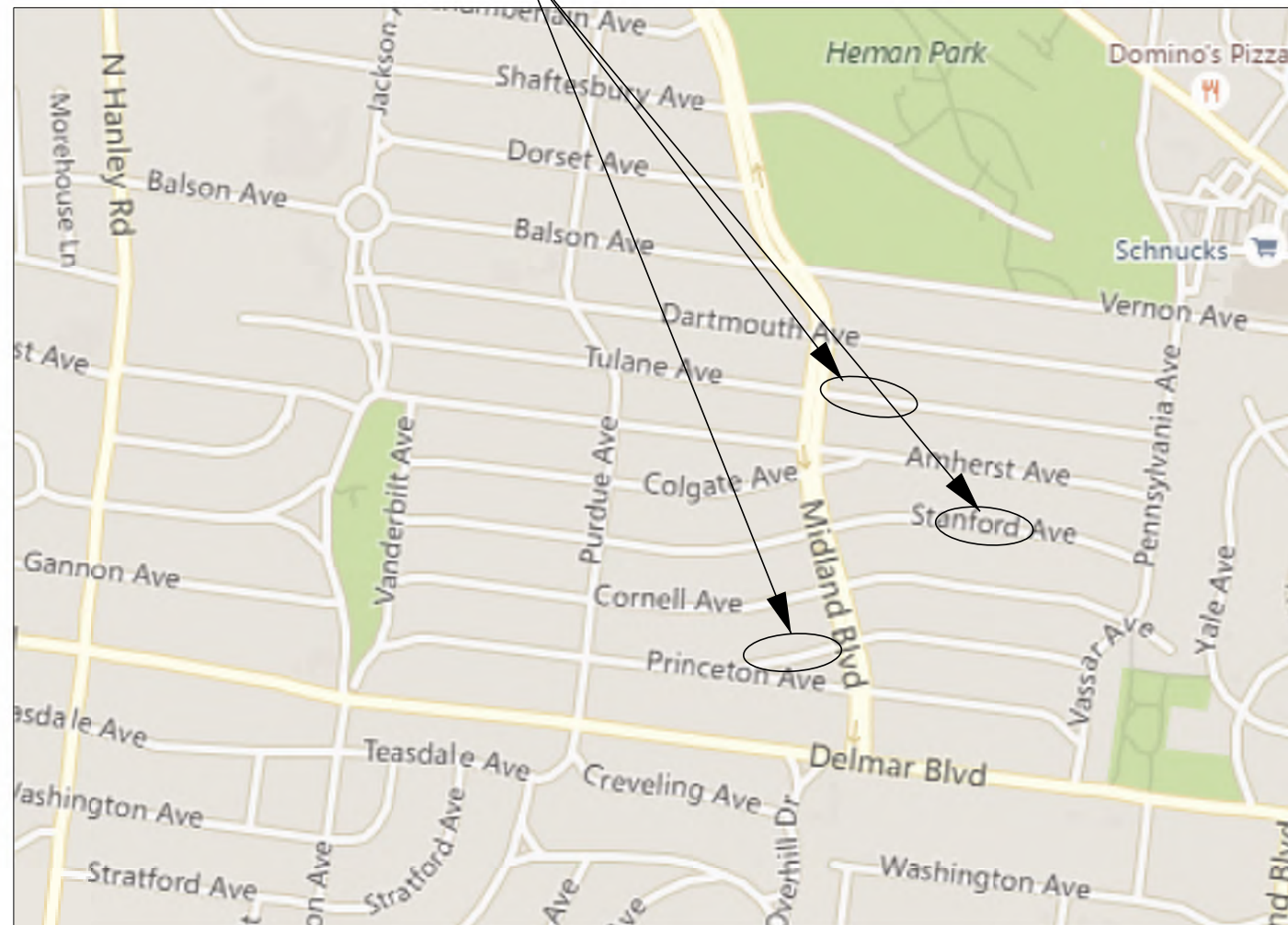


UNIVERSITY PARK SUBDIVISION

2024 PAVEMENT RECONSTRUCTION CONSTRUCTION PLANS

PROJECT LOCATION



LOCATION MAP
NOT TO SCALE

INDEX OF SHEETS

DESCRIPTION	SHEET NO.
TITLE SHEET	1
TYPICAL SECTION AND DETAILS	2
NOTES AND QUANTITIES	3
PLAN SHEETS	4-6

"THIS MEDIA SHOULD NOT BE CONSIDERED A CERTIFIED DOCUMENT."

DATE PREPARED
8/2/2024

ROUTE STATE
DISTRICT SHEET NO.
1

COUNTY

JOB NO.

CONTRACT ID.

PROJECT NO.

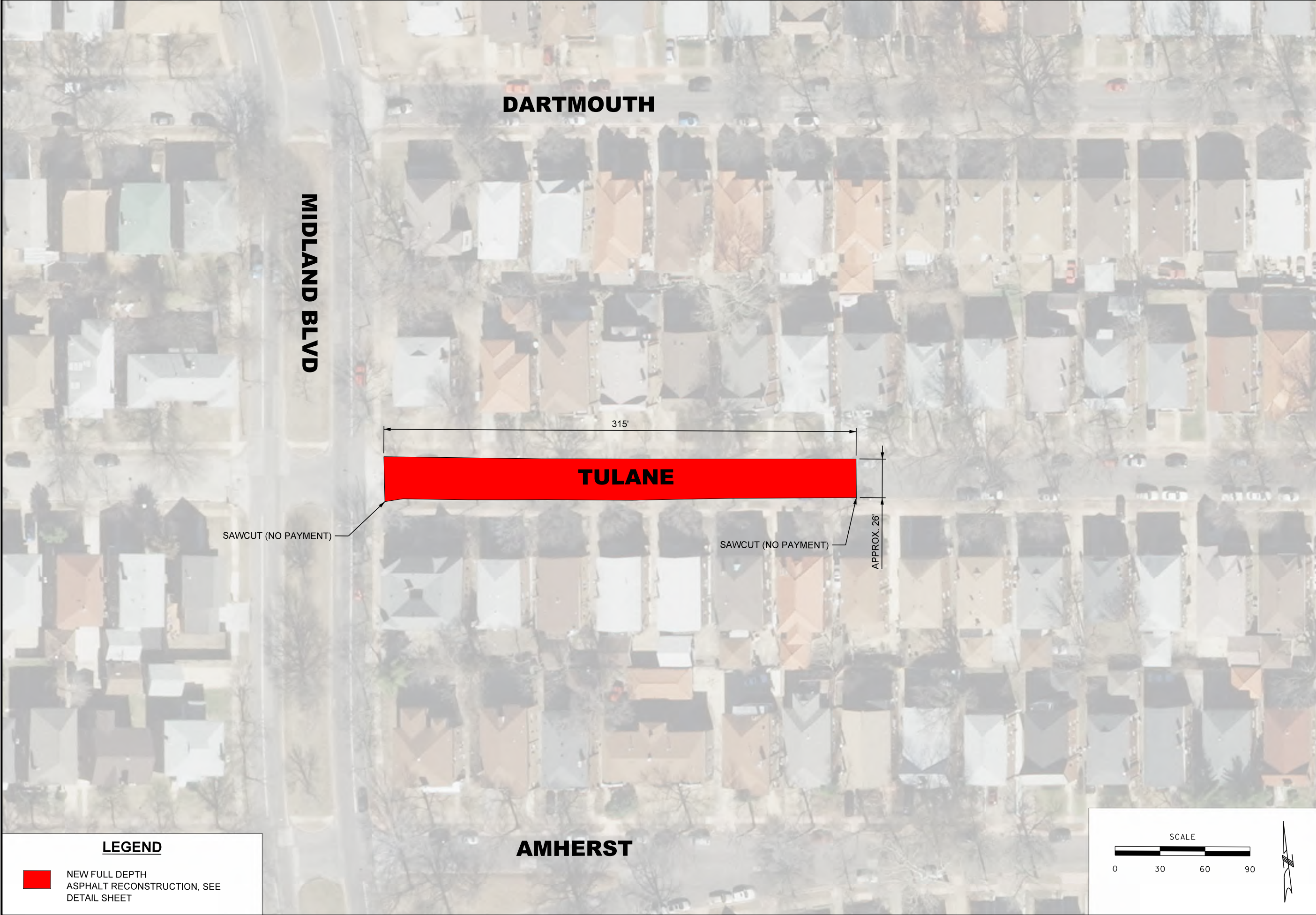
BRIDGE NO.

DESCRIPTION	DATE

HORNER SHIFRIN
401 S. 18TH ST., STE. 400 SAINT LOUIS, MO 63103-2296
314-531-4321 • FAX 314-531-6966 • WWW.HORNERSHIFRIN.COM
DISCIPLINE: PROFESSIONAL ENGINEERING
CERTIFICATE OF AUTHORITY: 0001895
EXPIRATION DATE: DECEMBER 31, 2024

**UNIVERSITY PARK
SUBDIVISION
2024 IMPROVEMENTS
TITLE SHEET**

IF A SEAL IS PRESENT ON THIS SHEET IT HAS BEEN ELECTRONICALLY SEALED AND DATED.



"THIS MEDIA SHOULD NOT BE CONSIDERED A CERTIFIED DOCUMENT."

DATE PREPARED 8/2/2024	
ROUTE	STATE MO
DISTRICT	SHEET NO. 4
COUNTY	
JOB NO.	
CONTRACT ID.	
PROJECT NO.	
BRIDGE NO.	

DATE	DESCRIPTION

HORNER SHIFRIN
 401 S. 18TH ST., STE. 400 SAINT LOUIS, MO 63103-2296
 314-531-4321 • FAX 314-531-6986 • WWW.HORNERSHIFRIN.COM
 DISCIPLINE: PROFESSIONAL ENGINEERING
 CERTIFICATE OF AUTHORITY: 000189
 EXPIRATION DATE: DECEMBER 31, 2024


**UNIVERSITY PARK
 SUBDIVISION
 2024 IMPROVEMENTS
 TULANE AVE
 PLAN SHEET**

LEGEND

 NEW FULL DEPTH ASPHALT RECONSTRUCTION, SEE DETAIL SHEET

SCALE

0 30 60 90



IF A SEAL IS PRESENT ON THIS SHEET IT HAS BEEN ELECTRONICALLY SEALED AND DATED.

TULANE

AMHERST

STANFORD

CORNELL

MIDLAND BLVD

*REMOVAL OF CURB AND GUTTER ADJACENT TO TREES SHALL BE COORDINATED WITH ARBORIST:
COLLEEN BAUM
GROEGE TREE CARE
6770 OLIVE BLVD
ST. LOUIS, MO 63130
314-863-1903

200' CURB & GUTTER (TBR&R)

EX. INLET (DND)

615'

ENSURE POSITIVE DRAINAGE TO EXISTING INLET

EX. TREE (DND)*

SAWCUT (NO PAYMENT)



APPROX. 26'

225'



SAWCUT (NO PAYMENT)

26' CURB & GUTTER (TBR&R)

LEGEND

-  NEW FULL DEPTH ASPHALT RECONSTRUCTION, SEE DETAIL SHEET
-  NEW 2' CONCRETE CURB AND GUTTER, SEE DETAIL SHEET

SCALE

"THIS MEDIA SHOULD NOT BE CONSIDERED A CERTIFIED DOCUMENT."

DATE PREPARED	
8/2/2024	
ROUTE	STATE
	MO
DISTRICT	SHEET NO.
	5
COUNTY	
JOB NO.	
CONTRACT ID.	
PROJECT NO.	
BRIDGE NO.	

DATE	DESCRIPTION

HORNER SHIFRIN

401 S. 18TH ST., STE. 400 SAINT LOUIS, MO 63103-2296
314-531-4321 • FAX 314-531-6966 • WWW.HORNERSHIFRIN.COM
DISCIPLINE: PROFESSIONAL ENGINEERING
CERTIFICATE OF AUTHORITY: 0001095
EXPIRATION DATE: DECEMBER 31, 2024

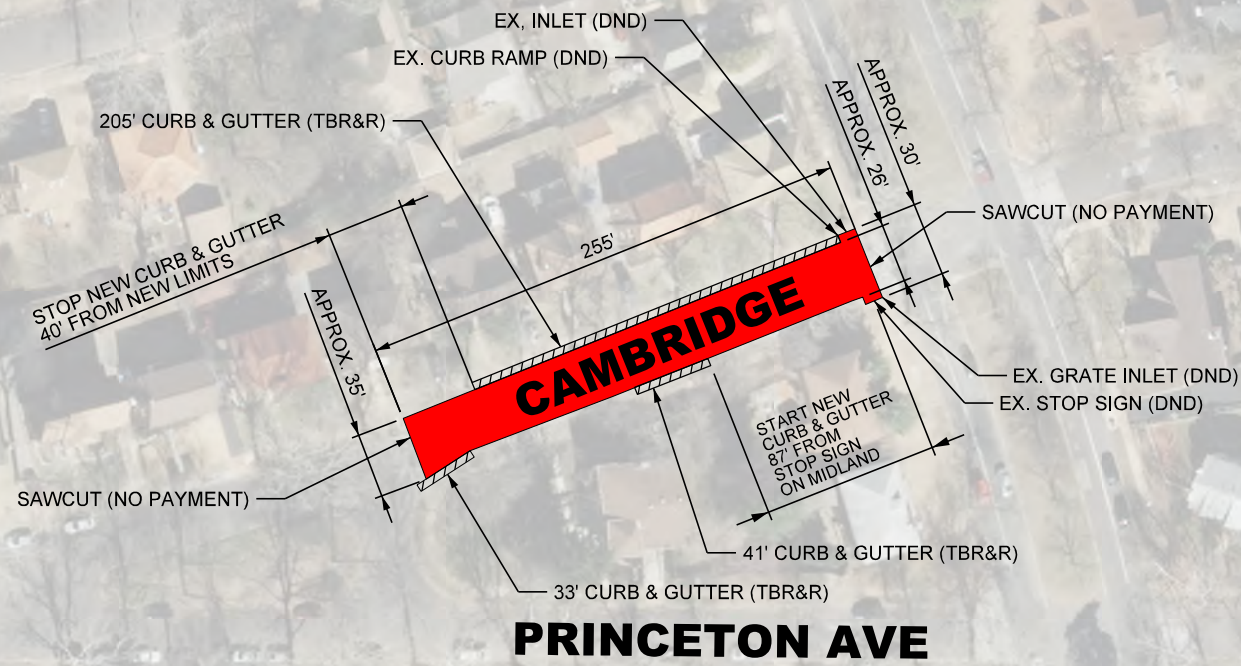
UNIVERSITY PARK SUBDIVISION
2024 IMPROVEMENTS
STANFORD AVE
PLAN SHEET

IF A SEAL IS PRESENT ON THIS SHEET IT HAS BEEN ELECTRONICALLY SEALED AND DATED.

STANFORD

CORNELL

MIDLAND BLVD

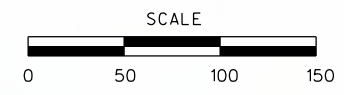


PRINCETON AVE

DELMAR BLVD

LEGEND

- NEW FULL DEPTH ASPHALT RECONSTRUCTION, SEE DETAIL SHEET
- NEW 2' CONCRETE CURB AND GUTTER, SEE DETAIL SHEET



"THIS MEDIA SHOULD NOT BE CONSIDERED A CERTIFIED DOCUMENT."

DATE PREPARED	
8/2/2024	
ROUTE	STATE
	MO
DISTRICT	SHEET NO.
	6
COUNTY	
JOB NO.	
CONTRACT ID.	
PROJECT NO.	
BRIDGE NO.	

DATE	DESCRIPTION

HORNER SHIFRIN
 401 S. 18TH ST., STE. 400 SAINT LOUIS, MO 63103-2296
 314-531-4321 • FAX 314-531-6986 • WWW.HORNERSHIFRIN.COM
 DISCIPLINE: PROFESSIONAL ENGINEERING
 CERTIFICATE OF AUTHORITY: 0001895
 EXPIRATION DATE: DECEMBER 31, 2024

**UNIVERSITY PARK
 SUBDIVISION
 2024 IMPROVEMENTS
 CAMBRIDGE AVE
 PLAN SHEET**

IF A SEAL IS PRESENT ON THIS SHEET IT HAS BEEN ELECTRONICALLY SEALED AND DATED.